



DRAFT FRAMEWORK PLAN FOR THE 2025/2026 IDP REVIEW PROCESS

**ALIGNED WITH THE BUDGET-ORGANISATIONAL
PERFORMANCE MANAGEMENT SYSTEM (OPMS)-INTEGRATED
WASTE MANAGEMENT PLAN (IWMP)-WATER SERVICES
DEVELOPMENT PLAN (WSDP)-LOCAL ECONOMIC
DEVELOPMENT(LED) STRATEGY- DISTRICT DEVELOPMENT
MODEL (DDM) ONE PLAN REVIEWS**

CONTENTS PAGE

Abbreviations' Explanation	2
1. Introduction.....	3
2. Legislative requirements for drafting of a Framework Plan (MSA Section 27) (what and aim of FP).....	3
3. Legislative requirements for IDP review to MSA (Sections 26,28and 34).....	5
4. 26. Core components of integrated development plans —anintegrated development plan must reflect—	5
5. Key matters in DM and LMs IDPs to be aligned, co-ordinated andintegrated as a DM Family:	8
_6. ALIGNMENT MECHANISM FOR THE IDP-BUDGET-OPMS-SDF (THE PROCESS)-DIAGRAM..	9
_7. SDF IMPLEMENTATION AND ALIGNMENTPROCESS.....	11
_____8. Determined procedures for DM/LM consultation and procedures for amendments to Framework Plan.	15
_____9. District Municipality consultation mechanism with other IDPstakeholders, such as Sector Departments.	18
10. Type of alignment mechanisms:.....	19
_____11. Conclusion	19

Abbreviations' Explanation

IDP	: Integrated Development Plan (product), Integrated Development Planning
MSA	: Municipal Systems Act, 32 of 2000
MFMA	: Municipal Finance Management Act, 56 of 2003
OPMS	: Organizational Performance Management System
SDF	: Spatial Development Framework
S56 Manager	: Manager appointed in terms of Section 54 of the Municipal Systems Amendment Act, 2011 /senior manager reporting to the municipal manager
SPLUMA	: Spatial Planning and Land-use Management Act, 16 of 2013
DDM	: District Development Model
WSDP	: Water Services Development Plan
NDP	: National Development Plan /Vision 2030
PGDP	: Provincial Growth and Development Plan
HOD	: Head of Department
M.E.C.	: Member of the Executive Council /Provincial Cabinet
CIF	: Capital Investment Framework (usually 3 or 5 years)
SoEs	: State Owned Enterprises
IWMP	: Integrated Waste Management Plan

Contact details

IDP	: Ms Zandile Magini (IDP Manager): Zandile.Magini@umdm.gov.za
Budget	: Ms Linda Ngubane (Manager: Budget): Linda.Ngubane@umdm.gov.za
ACFO	: Mr Vusi Kunene (ACFO): Vusi.kunene@umdm.gov.za
OPMS	: Ms Pindeka Luhabe (Manager: MS): Pindeka.Luhabe@umdm.gov.za
SDF	: Mrs Mandisa Khomo (Manager: Dev. Planning): Mandisa.Khomo@umdm.gov.za
DDM	: Mr Ben Cele (COO: UMDM): Ben.Cele@umdm.gov.za
WSDP	: Mrs Nozipho Mthethwa (Manager WSA): Nozipho.Mngadi@umdm.gov.za
LED	: Mr Siphon Ntuli (Manager LED): siphon.ntuli@umdm.gov.za

Telephone: 033-897-6700

1. Introduction

His Worship the Mayor Cllr M. Zuma supported by the Executive, Full Council and Management presents the IDP Review Framework Plan to guide the review of the IDP for 2025/2026, aligned with the Budget, OPMS, DDM, IWMP,LEDS and WSDP. This Framework Plan also guides the Local Municipalities.

The third review of our fifth generation IDP will be guided by the aspirations of our communities and other inputs from national, provincial and local spheres of government planning imperatives. This review is important as it is the third review and the 3rd year of implementing the IDP with its Vision towards 2027. There will be a continuation of focus on the level of development of our citizens as the District Municipality has positioned itself as a citizen-centric, results driven, and performance orientated. The revenue enhancement mechanisms will take centre stage among other imperatives. There is a strong sense of community participation and collaboration among all Municipalities that form the District Family.

2. Legislative requirements for drafting of a Framework Plan (MSA Section 27) (what and aim of FP)

The function of the Framework plan is to ensure that the process of the district IDP and local IDP's are mutually linked and can inform each other ensuring co-operative governance as contained in section 41 of the Constitution. The Framework must:

- i. Identify legally binding plans and planning requirements relevant to the District and local municipalities. Identify the matters to be included in the district and local IDP's that require Alignment. Specify the principles to be applied and co-ordinate the approach to be adopted in these matters. Determine procedures for consultation between the district municipality and the local municipalities. Determine the procedures to effect amendments to the Framework Plan. Incorporate comments from the MEC and those derived from Provincial Assessments. The Framework Plan is a co-ordination tool for the district to ensure that interrelated parallel planning processes within the district are coordinated to obtain maximum benefit for the district as a whole.

- a. Various processes within the IDP should be smoothly interlinked to ensure optimal effectiveness as well as ensure the agreement on joint timeframes that need to be reached between the various local municipalities and the district municipality.
- b. The District Municipality is in charge of the Framework Plan, which has to be agreed upon by all local municipalities and will be used by the local municipalities in finalising their Process Plans.
- c. The District Municipality will, through the DDM Economic Sector Investments and Infrastructure Development (ESIID) Cluster, monitor the compliance of the actual IDP process of all municipalities with the Framework Plan. This will ensure that corrective action is undertaken in time if in case of failure to adhere to the Framework Plan and the timeframes contained therein.
- d. Each Local Municipality will, however, be responsible for monitoring its own process plan.
- e. The uMgungundlovu District Municipality (DC 22) consists of seven Category B Municipalities and a District Management Area (KZDMA22) under the direct primary jurisdiction of the uMgungundlovu District Municipality. The seven Local Municipalities are:
 - a. uMshwathi Municipality (KZ 221)
 - b. uMngeni Municipality (KZ 222)
 - c. Mpofana Municipality (KZ 223)
 - d. Impendle Municipality (KZ 224)
 - e. Msunduzi Municipality (KZ 225)
 - f. Mkhambathini Municipality (KZ 226)
 - g. Richmond Municipality (KZ 227)

Each municipality must appoint an IDP Champion to steer the local IDP process within that municipality.

3. Legislative requirements for IDP review to MSA (Sections 26,28 and 34).

- 3.1. Section 25(1) of Municipal Systems Act, (Act 32) of 2000 directs that each municipal Council must, upon election adopt a single, inclusive and strategic plan which:
- a. links, integrates and co-ordinates plans.
 - b. aligns the resources and capacity with the implementation of the plan;

4. 26. Core components of integrated development plans —an integrated development plan must reflect—

- (a) The municipal Council's vision for the long-term development of the municipality with special emphasis on the municipality's most critical development an internal transformation needs;
- (b) An assessment of the existing level of development in the municipality, which must include an identification of communities that do not have access to basic municipal services;
- (c) The Council's development priorities and objectives for its elected term, including its local economic development aims and its internal transformation needs;
- (d) The Council's development strategies which must be aligned with any national or provincial sectoral plans and planning requirements binding on the Municipality in terms of legislation;
- (e) A spatial development framework, which must include the provision of basic guidelines for a land, use management system for the Municipality;
- (f) The council's operational strategies;
- (g) Applicable disaster management plans;
- (h) A financial plan, which must include a budget projection for at least the next three years; and
- (i) The key performance indicators and performance targets predetermined in terms of section 41.

4.1. On the basis of the agreed framework plan, Section 28 directs that each Municipal Council must adopt a process plan to guide the planning, drafting, adoption and reviewing of its integrated development plan.

Section 34 of the MSA states that: A Municipal Council -

- (a) must review its integrated development plan annually,
 - (i) In accordance with an assessment of its performance measurements in terms of section 4 i; and
 - (ii) To the extent that changing circumstances so demand; and may amend its integrated development plan in accordance with a prescribed process.

Consequently, the uMgungundlovu District Municipality, in pursuance of the above Constitutional and legislative directives, is thus presenting the following framework to guide process plans and, consequently the IDPs of both, the district itself and of the Local Municipalities within its area of jurisdiction. A meeting of the district IDP Sub-cluster was held with the seven Local Municipalities to discuss and agree on the plan.

UMgungundlovu District Municipality Vision, Mission, and Corporate Values



- Towards creating an economically vibrant, socially inclusive, environmentally resilient district with thriving communities and universal infrastructure for all by 2027 and beyond”



- The uMgungundlovu District Municipality will through sound governance and community participation, ensure the provision of equitable and sustainable services and economic growth.



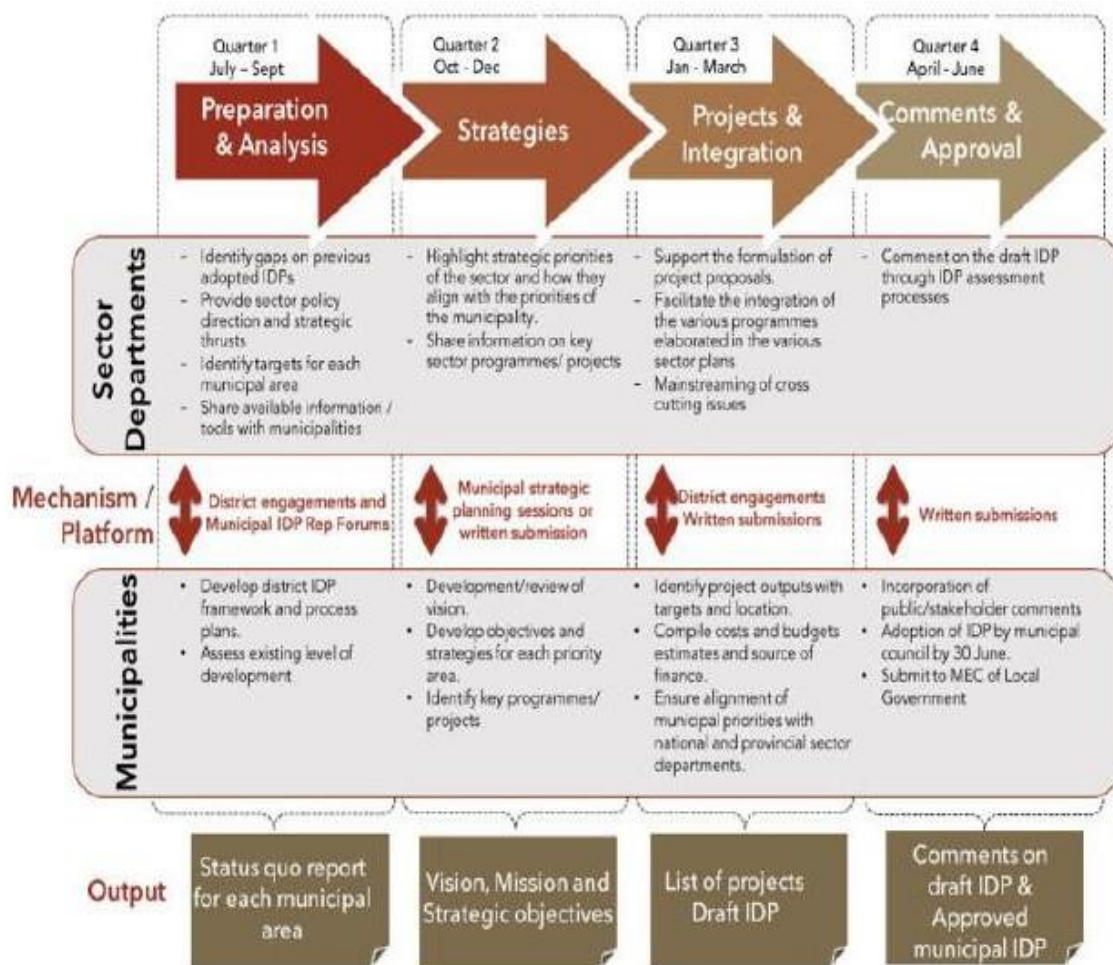
- Driven by the aspirations of the people, we strive to achieve our vision and mission through:
 - Providing services according to the Principles of Batho Pele (People First)
 - Practicing Ubuntu
 - Accepted codes of practices and standards of professionalism
 - Teamwork and commitment,
 - A high standard of work ethic, and
 - Constant engagement with stakeholders.



Source: Revised IDP Guidelines (2020)

Key Steps in the IDP Formulation Process

Phases in the IDP adoption process



Source: Revised IDP Guidelines (2020)

5. Key matters in DM and LMs IDPs to be aligned, co-ordinated and integrated as a DM Family:

A. Council Vision and Priorities

The District Municipality has adopted a Ten Point Plan to steer its strategic agenda in the five-year term of the IDP under review (2021-2026) that:

1. Metro (step by step roadmap to our common vision)
2. Universal access to services (100% access)
3. Maintenance plan (reliable provision of services)
4. Radical Economic Transformation (setting up of a functional Development Agency)
5. Community Partnerships (EPWP and Co-operatives)
6. Good Governance (obtaining a clean audit)
7. Sustainable IGR (a structured Mayors Forum)
8. Monitoring and evaluation (through the SDBIP's)
9. Special Programmes (for the vulnerable communities)
10. Achieving sustainable development and climate change mitigation

B. Outcome Based Approach

- OUTCOMES BASED APPROACH (CABINET LEKGOTLA RESOLUTIONS,
- DISTRICT LEKGOTLA RESOLUTIONS,
- OPMS,
- STATE OF THE NATION ADDRESS,
- STATE OF THE PROVINCE ADDRESS,
- SUSTAINABLE DEVELOPMENT GOALS (SDGS),
- PGDS,
- PGDP,
- DGDP,
- 14 NATIONAL OUTCOMES,
- BACK TO BASICS AND CLIMATE CHANGE);

All of the above aspects are already in the current IDP document and will be reviewed.

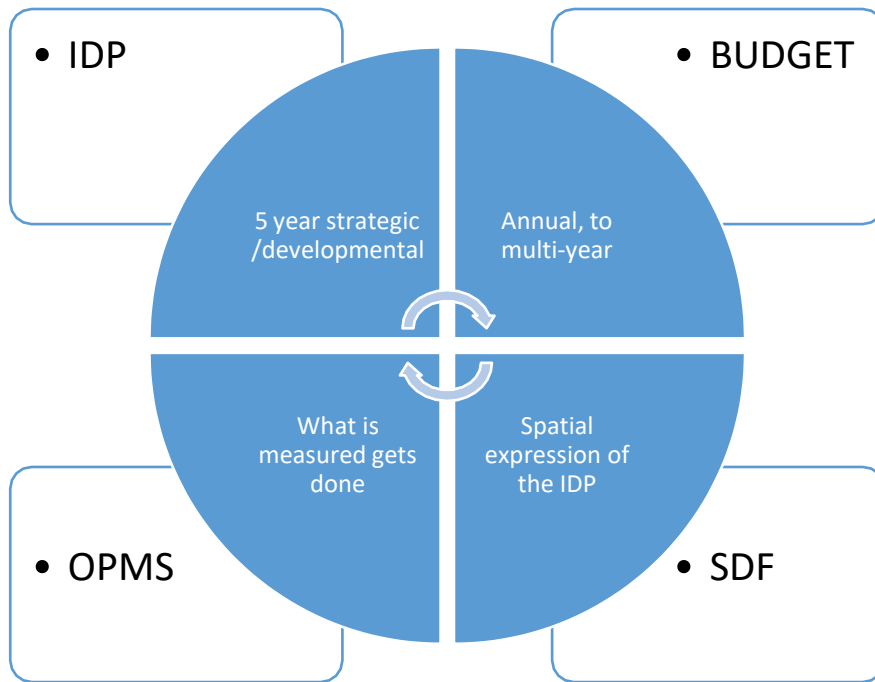
Also the following:

- A. The Sukuma Sakhe/War on Poverty and War Rooms.: part of the current IDP under review.**
- B. Reviewed Sector Plans**
- C. The District Development Model**
- D. The SDF, with Capital Investment Framework, to ensure that the IDP and SDF preparation processes are adequately aligned: addressed here and as part of the thorough review.**

6. ALIGNMENT MECHANISM FOR THE IDP-BUDGET-OPMS-SDF (THE PROCESS)-DIAGRAM

Table 1 alignment mechanism

No.	IDP	BUDGET	OPMS	SDF
1.	All phases And identification of needs	All phases And identification of needs	Setting of predetermined objectives and performance targets	Data collection and analysis
2.	Projects identification	Allocation of funding and a three-five year implementation plan	Allocation of roles and responsibilities	Spatial location of projects
3.	Ensure integration	Ensure alignment with Policies	Ensure compliance	Planning according to norms and standards and Legislation
4.	Approval: by Council	Approval: by Council	Approval: by Council	Approval: by Council
5.	Monitoring & Evaluation-monthly and Quarterly	Monthly and Quarterly reviews	Monthly and Quarterly reviews	Regular update of information and record keeping on new information, using GIS.
AN ALIGNED PROCESS THAT IS CONCURRENTLY BEING PLANNED, IMPLEMENTED, REVIEWED, MONITORED AND EVALUATED ON AN ANNUAL BASIS FOR THE NEXT FIVE YEARS.				



- **SPLUMA implementation requirements.**
Covered in the SDF review process as outlined here.

7. SDF IMPLEMENTATION AND ALIGNMENT PROCESS

THE SDF implementation and alignment process as follows:

“INTRODUCTION

SPLUMA notes the following implementation plan requirements:

- (p) Include an implementation plan comprising of—*
- (i) Sectoral requirements, including budgets and resources for implementation;*
 - (ii) Necessary amendments to a land use scheme;*
 - (iii) Specification of institutional arrangements necessary for implementation;*
 - (iv) Specification of implementation targets, including dates and monitoring indicators; and*
 - (v) Specification, where necessary, of any arrangements for partnerships in the implementation process.*

THE DISTRICT CAPITAL INVESTMENTS FRAMEWORK

A current list of Capital Investment projects is reflected in the current IDP of the District Municipality and reflected in the Annexures of the SDF. Capital Investment Projects of Umgeni Water are also reflected in the IDP and CIF.

The strategic spatial projects

The Strategic Spatial Projects identified through the planning process to be focused on by the Spatial Planning component of the uMgungundlovu District in the short to medium term are reflected in the table overleaf. It is noted that the majority of these projects / initiatives are not funded as yet and the focus in the short term will be on securing funding.

Table 2 PRELIMINARY LIST OF STRATEGIC SPATIAL PROJECTS / INITIATIVES

No.	Project / Initiative	Broad Purpose	Responsible Lead department / unit	Supporting department / unit	Priority
1	Reuse wastewater (grey water) for irrigation for commercial, subsistence or urban agriculture or for industrial purposes.	Correction of issues with the PMB wastewater system is critical, particularly in the long-term at a strategic level. This should not be limited to grey water but the most efficient is to re-use treated sewage. This is being used extensively in other parts of the world and should be a goal for our District. Importantly however, this does not provide an additional water resource as return flows are important to maintaining flows in rivers (albeit in a polluted state) but should be seen as an opportunity to limit the impact of WWTWs on rivers and downstream users by leaving more unpolluted water in the river by using treated water instead of abstracting more river water. Also, the agricultural price of water is presently under review. It is grossly under-priced and as such there is no incentive for efficient use. The district however is not responsible for supplying water to	UMDM Infrastructure Services, Umgeni Water	UMDM Economic and Development Planning <ul style="list-style-type: none"> • Development Planning • Climate Change 	Medium - long

No.	Project / Initiative	Broad Purpose	Responsible Lead department / unit	Supporting department / unit	Priority
		farmers, and as such will have limited opportunity to influence this.			
2	Alternative nature-based sewage treatment methods	Alternative nature-based sewage treatment methods, to negate the need for municipal sewerage reticulation is proposed. Wetland use could be an option. The aim must be to move away from flush toilets as an important part of water demand management. This is more a perception issue than a practical one. The district should be implementing projects to firstly understand the existing perceptions regarding composting toilets and then to look at identifying opportunities to promote, facilitate and incentivise their use.	UMDM Infrastructure Services, Umgeni Water	UMDM Economic and Development Planning <ul style="list-style-type: none"> Development Planning Climate Change 	Medium - long
3	Preparation of uMDM Urban Region Development Plan.	The preparation of an integrated Urban Region Development Plan that will formulate and set out the development goals and objectives for the proposed Urban Region and develops strategies for achieving the stated goals and objectives. Improved integration of the core nodal areas and the urban complex (Msunduzi) in the district.	UMDM Economic and Development Planning <ul style="list-style-type: none"> Development Planning 	<ul style="list-style-type: none"> COGTA 	Medium

ORGANIZATIONAL / INSTITUTIONAL ARRANGEMENTS

CURRENT ARRANGEMENTS

At present the Spatial Planning function located in the District is responsible for District wide coordination of strategic spatial planning. The Spatial Planning Unit is then also, with the various local municipalities that participated in the planning process, the champion of the District Spatial Development Framework.

The District Development Planning Shared Services currently provides Development Planning and GIS support to all the Municipalities in the District, excluding Msunduzi. The

Development Planning component is dealt with by a senior professional providing support to all the Municipalities.

The GIS support function, linked to the District Planning Shared Services, is split between two staff members located in the District supporting Mkhambathini, uMshwathi and Richmond Municipalities and two staff members located at the uMngeni Municipality responsible for uMngeni, Mpofana and Impendle.

8. Determined procedures for DM/LM consultation and procedures for amendments to Framework Plan.

a. Horizontal alignment (within the District family via Framework Plan).

As recorded in the Process Plan, there are planned meetings of the IDP Sub-Cluster / Planners Forums to take place between the District Family Planners. The IGR Structure depicted below is the overall structure for “horizontal alignment” with the District:

6.2. Type of alignment mechanisms:

DDM is a practical Intergovernmental Relations (IGR) mechanism for all three spheres of government & SOE's to work jointly and to plan and act in unison.

The purpose of Inter-Governmental Relations (IGR) is to:

- ❖ encourage coordination,
- ❖ co-operative decision-making.
- ❖ ensure the execution of policies through the effective flow of communication;
- ❖ co-ordinate priorities and budgets across different sectors and;
- ❖ the prevention of disputes and conflicts between all spheres of Government

IGR is to further foster an integrated approach to governance, aimed at improving government planning, decision making and service delivery at national, provincial and local levels. The coordination of all spheres has also incorporated the **Operation Sukuma Sakhe**.

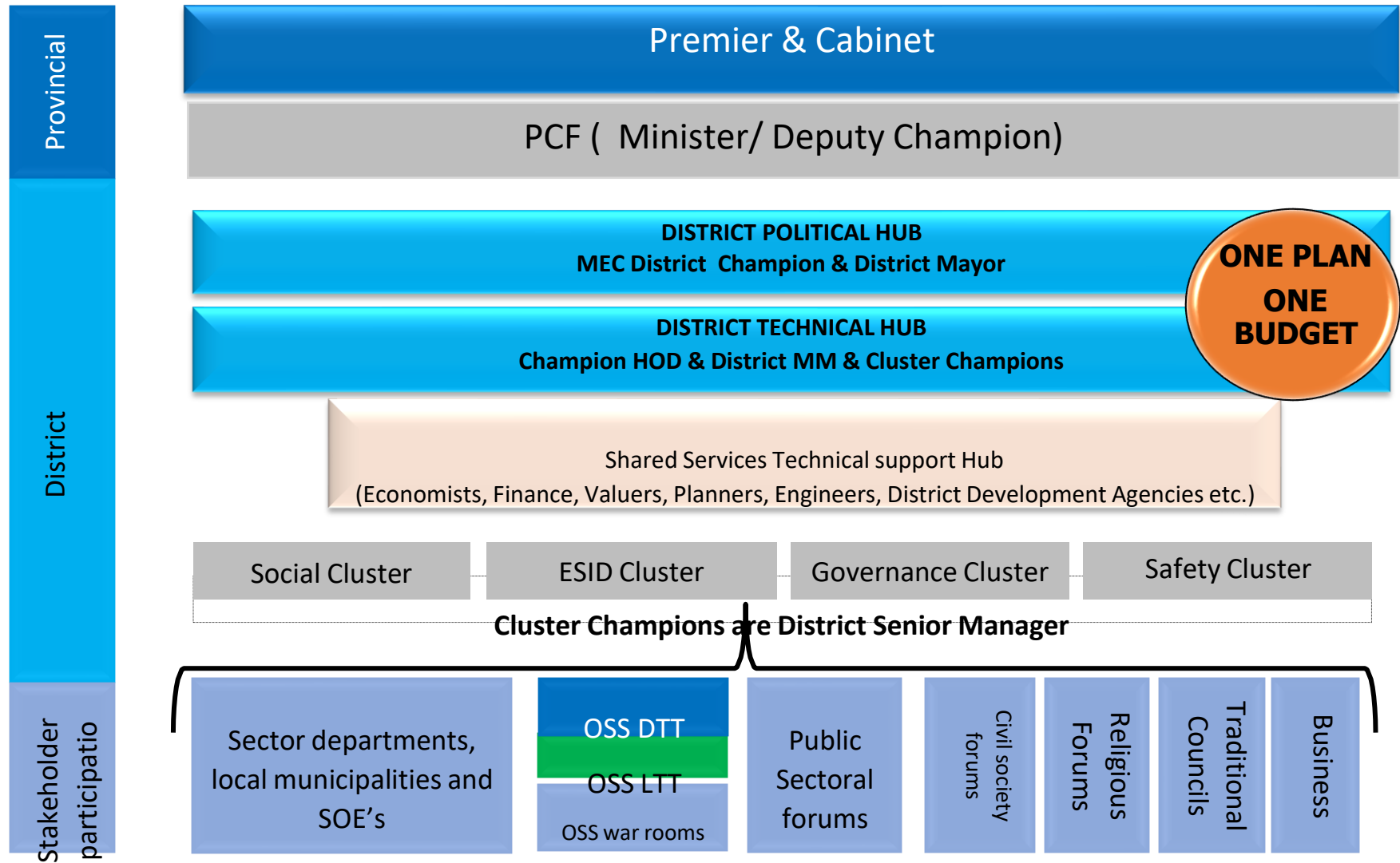
DDM OBJECTIVES

To **achieve coherent governance**, the President announced:-

- **a coordinated District & Metro level approach to business by all 3 spheres-** “we are going to do away with this fragmented approach to development.”
- 44 Districts and 8 Metros will be the high impact zones for the country;

- **Redirect and confirm Co-operative governance & Integrated collaborative planning and implementation** undertaken at a District and Metro level by all 3 spheres.
 - Institutionalized Long term co planning in ONE PLAN per District & Metro towards Sustainable Development and Spatial Transformation & Equity.
 - Integrated Services
 - Strengthened M&E
- **DDM is a practical Intergovernmental Relations (IGR) mechanism for all three spheres of government & SOE's to work jointly and to plan and act in unison**
- Ensure that we **bring to life the aspirations** of The People Shall Govern & **Bring government closer to the people**. Developmental change is shaped and owned at district level in partnership with communities, citizens, and social partners.

An Illustration of DDM Framework: Provincial Level is depicted on the next page.



- **Representative Forums**

The district will host at least three IDP Representative Forum meetings during the 2025/2026 financial year. The District will participate in the IDP Forums of the Local Municipalities. Forums of all its LMs and host Izimbizo. The dates of these meetings will be reflected in the Process Plan.

C. Alignment With Activities of the Provincial IDP Management Plan.

The Processes outlined in the Process Plan are aligned to the Provincial IDP Management Plan. The key activities and their subsequent dates are included and will form part of the Process Plan.

9. District Municipality consultation mechanism with other IDP stakeholders, such as Sector Departments.

7.1. Vertical alignment (National, Provincial, Local spheres)

The National sphere has provided a national framework and guidelines for sectoral, provincial, and municipal planning. This contributes to the creation of a normative framework consisting of common policy guidelines and principles, general strategic guidelines regarding sectoral strategies and spatial macro-strategies.

The national spheres should also co-ordinate and prioritise programmes and budgets between sectors and the national sphere in line with the national framework and the National Spatial Development Perspective (NSDP)-National Development Plan (NDP), the State of the Nation Address as well as the 2024 targets and beyond.

7.2. Provincial Level

At this level, there are specific frameworks with mid-term objectives and targets for public investment and services as well as a spatial macro-framework for all sectors and municipalities. Sectoral programmes and District programmes also need to be coordinated and aligned. Provincial level is best positioned to facilitate this. Municipalities are urged to be pro-active in soliciting this assistance. Important among policy directives are the following:

- Priorities set by the Premiers State of the Province Address
- Priorities set out in the Provincial Growth and Development Strategy (PGDS) and PGDP. Provincial Spatial Economic Development Perspective

7.3. Local Level

Municipalities have to prepare a 5-year IDP. Interaction between the District and Local Municipalities is essential. The Framework Plan for the District must address the alignment.

The Municipal Manager must, with the support of the IDP Manager / Coordinator and the IDP Steering Committee, ensure that all role players are performing their duties. Performance will be monitored at all the meetings. Organisational restructuring should be provided for interdisciplinary teams around each Key Performance Area.

7.4. Cross border alignment (other Districts & Provinces).

Cross-border alignment will be attained through the Provincial Planners Forum and the alignment sessions. Furthermore, the DDM IGR structures will also be utilized.

10. Type of alignment mechanisms:

- DDM Structures
- **Representative Forums:** meetings of the IDP RF are detailed on the Process Plan, meetings will be per IDP Phase.
- **One-on-one Sector Department meetings:** There will be one-on-one meetings for the purposes of information exchanges during the months of November and December.

11. Conclusion

The District Planners will meet on the **21 July 2023** to agree on the draft Framework Plan and Process Plan. Secondly, the District Executive Committee will endorse the draft plans to be advertised for public comment prior to adoption by Council.

The drafts were on advert and concluded after comments have been received from stakeholders including CoGTA. The detailed action programme with dates of milestone's and events is in the Process Plan.