



uMGUNGUNDLOVU
UMASIPALA WESIFUNDA
DISTRICT MUNICIPALITY
DISTRİK MUNISIPALİTEİT

uMgungundlovu District Municipality Final Integrated Development Plan Framework Plan 2023/2024

Aligned to the Budget- Organisational Performance Management System (OPMS)- Spatial Development Framework (SDF)- Water Services Development Plan (WSDP) and the District Development Model (DDM One Plan- One Budget) Reviews.



Abbreviations’ Explanation	2
Contact details.....	2
1. Introduction.....	3
2. Legislative requirements for drafting of a Framework Plan (MSA Section 27) (what and aim of FP)	3
3. Legislative requirements for IDP review to MSA (e.g. Sections 26,28 and 34).....	4
4. 26. Core components of integrated development plans —an integrated development plan must reflect—	5
Key Steps in the IDP Formulation Process	6
Phases in the IDP adoption process	7
5. Key matters in DM and LMs IDPs to be aligned, co-ordinated and integrated as a DM Family:.....	7
SDF IMPLEMENTATION AND ALIGNMENT PROCESS.....	10
6. Determined procedures for DM/LM consultation and procedures for amendments to Framework Plan.	11
7. District Municipality consultation mechanism with other IDP stakeholders, such as Sector Departments.....	14
8. Type of alignment mechanisms:.....	15
9. Conclusion	15

Abbreviations' Explanation

IDP	: Integrated Development Plan (product), Integrated Development Planning
MSA	: Municipal Systems Act, 32 of 2000
MFMA	: Municipal Finance Management Act, 56 of 2003
MStrA	: Municipal Structures Act, 117 of 1998
OPMS	: Organizational Performance Management System
SDF	: Spatial Development Framework
S54 Manager	: Manager appointed in terms of Section 54 of the Municipal Systems Amendment Act, 2011 / the municipal manager
S56 Manager	: Manager appointed in terms of Section 54 of the Municipal Systems Amendment Act, 2011 /senior manager reporting to the municipal manager
PDA	: Planning and Development Act-KZN 2000 as Amended
SPLUMA	: Spatial Planning and Land-use Management Act, 16 of 2013
NDP	: National Development Plan /Vision 2030
PGDP	: Provincial Growth and Development Plan
HOD	: Head of Department
M.E.C.	: Member of the Executive Council /Provincial Cabinet
CIF	: Capital Investment Framework (usually 3 or 5 years)
SoEs	: State Owned Enterprises

Contact details

IDP : Mrs Phumzile Luswazi (IDP Manager) : Phumzile.Luswazi@umdm.gov.za

Budget: Ms Linda Ngubane (Manager:Budget) : Linda.Ngubane@umdm.gov.za

CFO : Mr Siphon Ndabandaba : Siphon.ndabandaba@umdm.gov.za

OPMS : Mrs Andile Shezi (Manager) : Andile.Mpangase@umdm.gov.za

SDF : Mrs Mandisa Khomo (Manager: Dev. Planning): Mandisa.Khomo@umdm.gov.za

DGDP : Mr Ben Cele (COO) : Ben.Cele@umdm.gov.za

DDM : Mr Ben Cele (COO) : Ben.Cele@umdm.gov.za

WSDP : Mrs Nozipho Mthethwa (Manager WSA): Nozipho.Mngadi@umdm.gov.za

LED : Mr Siphon Ntuli (Manager LED): siphon.ntuli@umdm.gov.za

Telephone: 033-897-6700, Fax: 033: 342-5502

1. Introduction

His Worship the Mayor Cllr M. Zuma supported by the Executive, Full Council and Management presents the IDP Review Framework Plan to guide the review of the IDP for 2023/2024, aligned with the Budget, OPMS, SDF, and DDM. This Framework Plan also guides the Local Municipalities.

The first review of our fifth generation IDP will be guided by the aspirations of our communities and other inputs from International, Regionally, Nationally and Provincially. This review is important as it is the first review and the first year of implementing the IDP with its Ten Point Plan and Vision towards 2027. There will be a continuation of focus on the level of development of our citizens as the District Municipality has positioned itself as a citizen-centric, results driven, and performance orientated. The revenue enhancement mechanisms will take centre stage among other imperatives. There is a strong sense of community participation and collaboration among all Municipalities that form the District Family.

2. Legislative requirements for drafting of a Framework Plan (MSA Section 27) (what and aim of FP)

2.1 The function of the Framework plan is to ensure that the process of the district IDP and local IDP's are mutually linked and can inform each other ensuring co-operative governance as contained in section 41 of the Constitution. The Framework must:

- Identify legally binding plans and planning requirements relevant to the District and local municipalities.
- Identify the matters to be included in the district and local IDP's that require alignment.
- Specify the principles to be applied and co-ordinate the approach to be adopted in these matters.
- Determine procedures for consultation between the district municipality and the local municipalities
- Determine the procedures to effect amendments to the Framework Plan
- Incorporate comments from the MEC and those derived from Provincial Assessments.
- The Framework Plan is a co-ordination tool for the district to ensure that interrelated parallel planning processes within the district are coordinated to obtain maximum benefit for the district as a whole.

- 2.2 Various processes within the IDP should be smoothly interlinked to ensure optimal effectiveness as well as ensure the agreement on joint timeframes that need to be reached between the various local municipalities and the district municipality.
- 2.3 The District Municipality is in charge of the Framework Plan, which has to be agreed upon by all local municipalities and will be used by the local municipalities in finalising their Process Plans.
- 2.4 The District Municipality will, through the District Technical Coordinating Committee (Municipal Manager's Forum), monitor the compliance of the actual IDP process of all municipalities with the Framework Plan. This will ensure that corrective action is undertaken in time if in case of failure to adhere to the Framework Plan and the timeframes contained therein.
- 2.5 Each Local Municipality will, however, be responsible for monitoring its own process plan.
- 2.6 The uMgungundlovu District Municipality (DC 22) consists of seven Category B Municipalities and a District Management Area (KZDMA22) under the direct primary jurisdiction of the uMgungundlovu District Municipality. The seven Local Municipalities are:
- a. uMshwathi Municipality (KZ 221)
 - b. uMngeni Municipality (KZ 222)
 - c. Mpofana Municipality (KZ 223)
 - d. Impendle Municipality (KZ 224)
 - e. Msunduzi Municipality (KZ 225)
 - f. Mkhambathini Municipality (KZ 226)
 - g. Richmond Municipality (KZ 227)

Each municipality has to appoint an IDP Champion to steer the local IDP process within that municipality.

3. Legislative requirements for IDP review to MSA (e.g. Sections 26,28 and 34).

- 3.1. Section 25(1) of Municipal Systems Act, (Act 32) of 2000 directs that each municipal Council must, upon election adopt a single, inclusive and strategic plan which:
- a. links, integrates and co-ordinates plans.
 - b. aligns the resources and capacity with the implementation of the plan;

4. 26. Core components of integrated development plans —an integrated development plan must reflect—

- (a) The municipal Council's vision for the long-term development of the municipality with special emphasis on the municipality's most critical development and internal transformation needs;
- (b) An assessment of the existing level of development in the municipality, which must include an identification of communities that do not have access to basic municipal services;
- (c) The Council's development priorities and objectives for its elected term, including its local economic development aims and its internal transformation needs;
- (d) The Council's development strategies which must be aligned with any national or provincial sectoral plans and planning requirements binding on the Municipality in terms of legislation;
- (e) A spatial development framework, which must include the provision of basic guidelines for a land, use management system for the Municipality;
- (f) The council's operational strategies;
- (g) Applicable disaster management plans;
- (h) A financial plan, which must include a budget projection for at least the next three years; and
- (i) The key performance indicators and performance targets predetermined in terms of section 41.

4.1. On the basis of the agreed framework plan, Section 28 directs that each Municipal Council must adopt a process plan to guide the planning, drafting, adoption and reviewing of its integrated development plan.

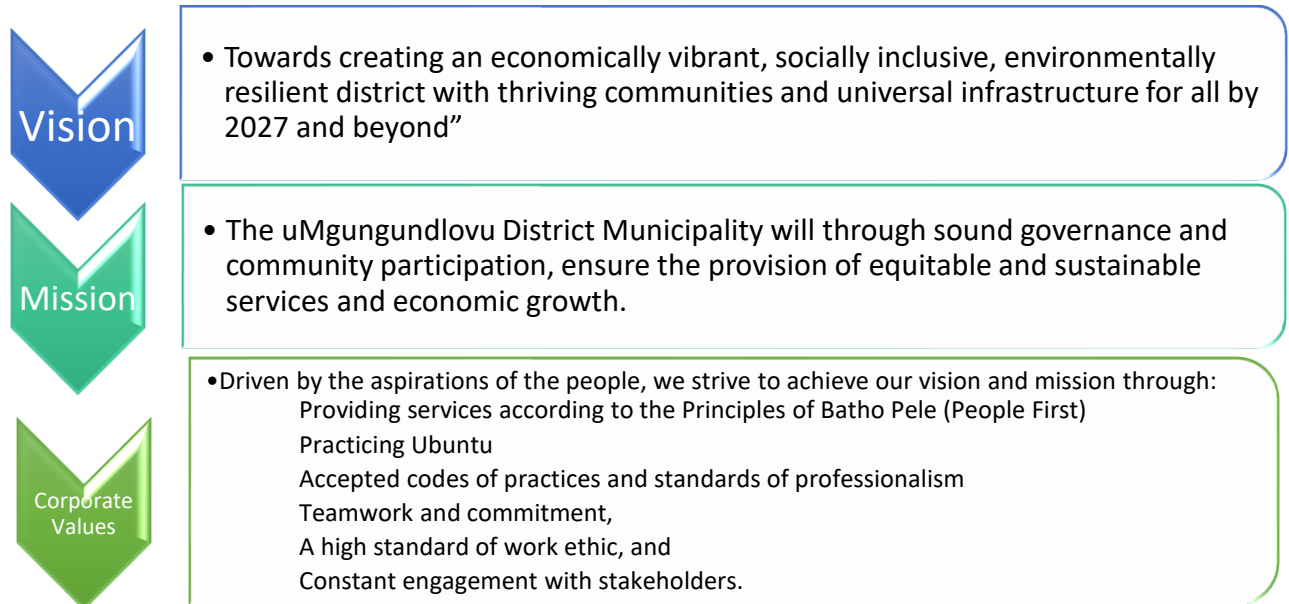
Section 34 of the MSA states that: A Municipal Council -

- (a) must review its integrated development plan annually,
 - (i) In accordance with an assessment of its performance measurements in terms of section 4 i; and

(ii) To the extent that changing circumstances so demand; and may amend its integrated development plan in accordance with a prescribed process.

Consequently, the uMgungundlovu District Municipality, in pursuance of the above Constitutional and legislative directives, is thus presenting the following framework to guide process plans and, consequently the IDPs of both, the District itself and of the Local Municipalities within its area of jurisdiction. A meeting is scheduled with the seven Local Municipalities to discuss and agree on the plan

UMgungundlovu District Municipality Vision, Mission, and Corporate Values

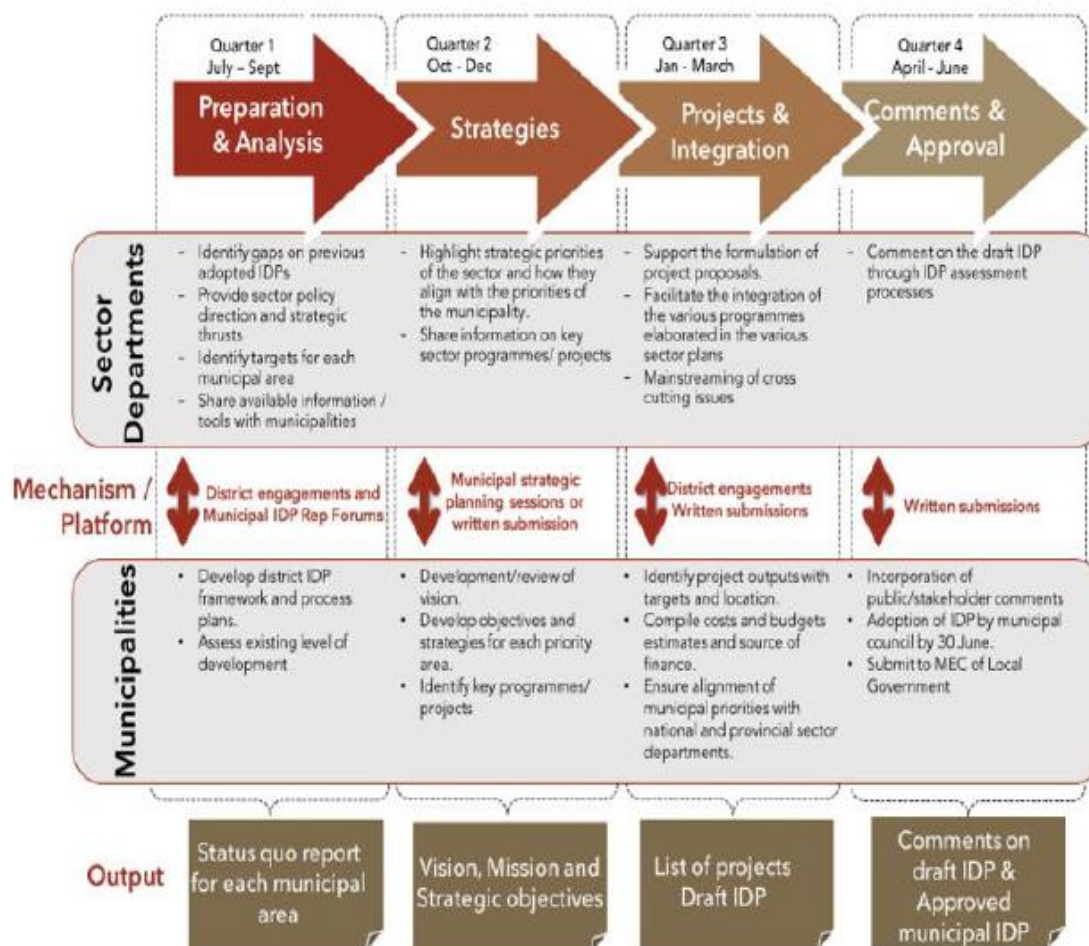


Key Steps in the IDP Formulation Process



Source: Revised IDP Guidelines (2020)

Phases in the IDP adoption process



Source: Revised IDP Guidelines (2020)

5. Key matters in DM and LMs IDPs to be aligned, co-ordinated and integrated as a DM Family:

a. Council vision and priorities.

The District Municipality has adopted a Ten Point Plan to steer its strategic agenda in the five-year term of the IDP:

1. Metro (step by step roadmap to our common vision)
2. Universal access to services (100% access)
3. Maintenance plan (reliable provision of services)

4. Radical Economic Transformation (setting up of a functional Development Agency)
5. Community Partnerships (EPWP and Co-operatives)
6. Good Governance (obtaining a clean audit)
7. Sustainable IGR (a structured Mayors Forum)
8. Monitoring and evaluation (through the SDBIP's)
9. Special Programmes (for the vulnerable communities)
10. Achieving sustainable development and climate change mitigation

b. Outcomes based approach (Cabinet Lekgotla Resolutions, District Lekgotla Resolutions, OPMS, State of the Nation Address, State of the Province Address, Sustainable Development Goals (SDGs), PGDS, PGDP, DGDP, 14 National Outcomes, Back to Basics and Climate Change);

All of the above aspects are already in the current IDP document and will be reviewed. Also the following:

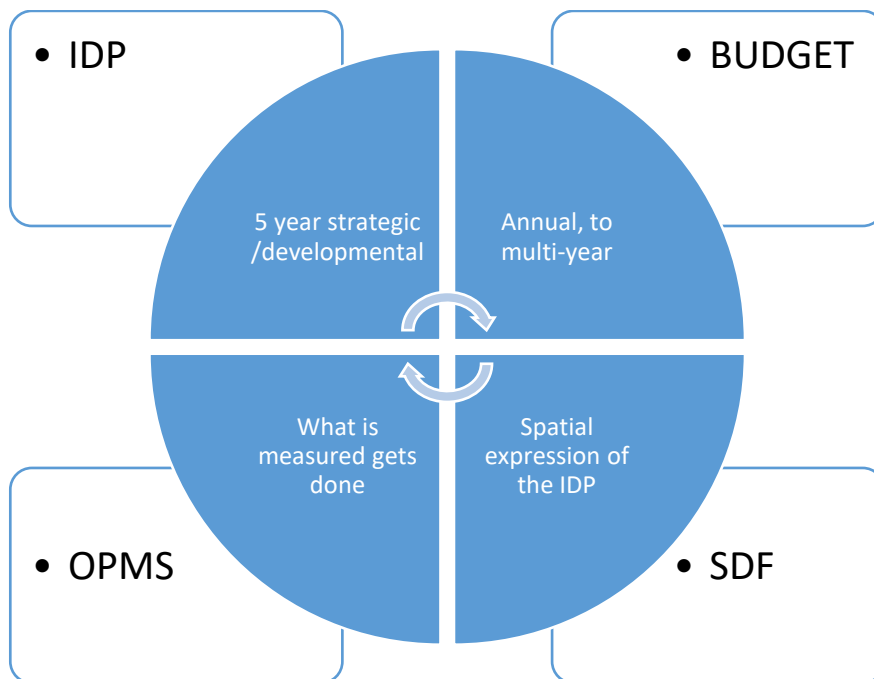
- c. The Sukuma Sakhe/War on Poverty and War Rooms.:** part of the current IDP under review.
- d. Reviewed Sector Plans**
- e. The District Development Model**
- f. The SDF, with Capital Investment Framework, to ensure that the IDP and SDF preparation processes are adequately aligned:** addressed here and as part of the thorough review.

ALIGNMENT MECHANISM FOR THE IDP-BUDGET-OPMS-SDF (THE PROCESS)-DIAGRAM

Table 1 alignment mechanism

No.	IDP	BUDGET	OPMS	SDF
1.	All phases And identification of needs	All phases And identification of needs	Setting of predetermined objectives and performance targets	Data collection and analysis
2.	Projects identification	Allocation of funding and a three-five year implementation plan	Allocation of roles and responsibilities	Spatial location of projects
3.	Ensure integration	Ensure alignment with Policies	Ensure compliance	Planning according to norms and standards and Legislation
4.	Approval: by Council	Approval: by Council	Approval: by Council	Approval: by Council
5.	Monitoring & Evaluation-monthly and Quarterly	Monthly and Quarterly reviews	Monthly and Quarterly reviews	Regular update of information and record keeping on

No.	IDP	BUDGET	OPMS	SDF
				new information, using GIS.
AN ALIGNED PROCESS THAT IS CONCURRENTLY BEING PLANNED, IMPLEMENTED, REVIEWED, MONITORED AND EVALUATED ON AN ANNUAL BASIS FOR THE NEXT FIVE YEARS.				



- **SPLUMA implementation requirements.**
Covered in the SDF review process as outlined here.

The district is in the process of reviewing the 2014 Spatial Development Framework. The project was funded by the Department of Cooperative Governance and Traditional Affairs(COGTA) . The draft Spatial Development Framework will be adopted by Council at the end

“INTRODUCTION

SPLUMA notes the following implementation plan requirements:

(p) Include an implementation plan comprising of—

(i) Sectoral requirements, including budgets and resources for implementation;

(ii) Necessary amendments to a land use scheme;

(iii) Specification of institutional arrangements necessary for implementation;

(iv) Specification of implementation targets, including dates and monitoring indicators; and

(v) Specification, where necessary, of any arrangements for partnerships in the implementation process.

SDF IMPLEMENTATION AND ALIGNMENT PROCESS

THE SDF implementation and alignment process as follows:

THE DISTRICT CAPITAL INVESTMENTS FRAMEWORK

The District secured funding for preparation of a District Capital Investment Framework. A current list of Capital Investment projects is reflected in the current IDP of the District Municipality and reflected in the Annexures of the SDF. Capital Investment Projects of Umgeni Water are also reflected in the IDP and CIF.

The strategic spatial projects

The Strategic Spatial Projects identified through the planning process to be focused on by the Spatial Planning component of the uMgungundlovu District in the short to medium term are reflected in the table overleaf. It is noted that the majority of these projects / initiatives are not funded as yet and the focus in the short term will be on securing funding and initiating these projects in cooperation with the relevant local municipalities.

SDF FUNDING

UMgungundlovu District Municipality has received funding from the Department of Cooperative Governance and Traditional Affairs(COGTA) for the review of the Spatial Development Framework (SDF).

ORGANIZATIONAL / INSTITUTIONAL ARRANGEMENTS

CURRENT ARRANGEMENTS

At present the Spatial Planning function located in the District is responsible for District wide coordination of strategic spatial planning. The Spatial Planning Unit is then also, with the various local municipalities that participated in the planning process, the champion of the District Spatial Development Framework.

The District Development Planning Shared Services currently provides Development Planning and GIS support to all the Municipalities in the District, excluding Msunduzi. The Development Planning component is dealt with by a senior professional providing support to all the Municipalities.

The GIS support function, linked to the District Planning Shared Services, is split between two staff members located in the District supporting Mkhambathini, uMshwathi and Richmond Municipalities and two staff members located at the uMngeni Municipality responsible for uMngeni, Mpofana and Impendle.

6. Determined procedures for DM/LM consultation and procedures for amendments to Framework Plan.

6.1 Horizontal alignment (within the District family via Framework Plan).

As recorded in the Process Plan, there are planned meetings of the IDP Sub-Cluster / Planners Forums to take place between the District Family Planners. The IGR Structure depicted below is the overall structure for “horizontal alignment” with the District:

6.2. Type of alignment mechanisms:

DDM is a practical Intergovernmental Relations (IGR) mechanism for all three spheres of government & SOE’s to work jointly and to plan and act in unison.

The purpose of Inter-Governmental Relations (IGR) is to:

- ❖ encourage coordination,
- ❖ co-operative decision-making.
- ❖ ensure the execution of policies through the effective flow of communication.
- ❖ co-ordinate priorities and budgets across different sectors and;
- ❖ the prevention of disputes and conflicts between all spheres of Government

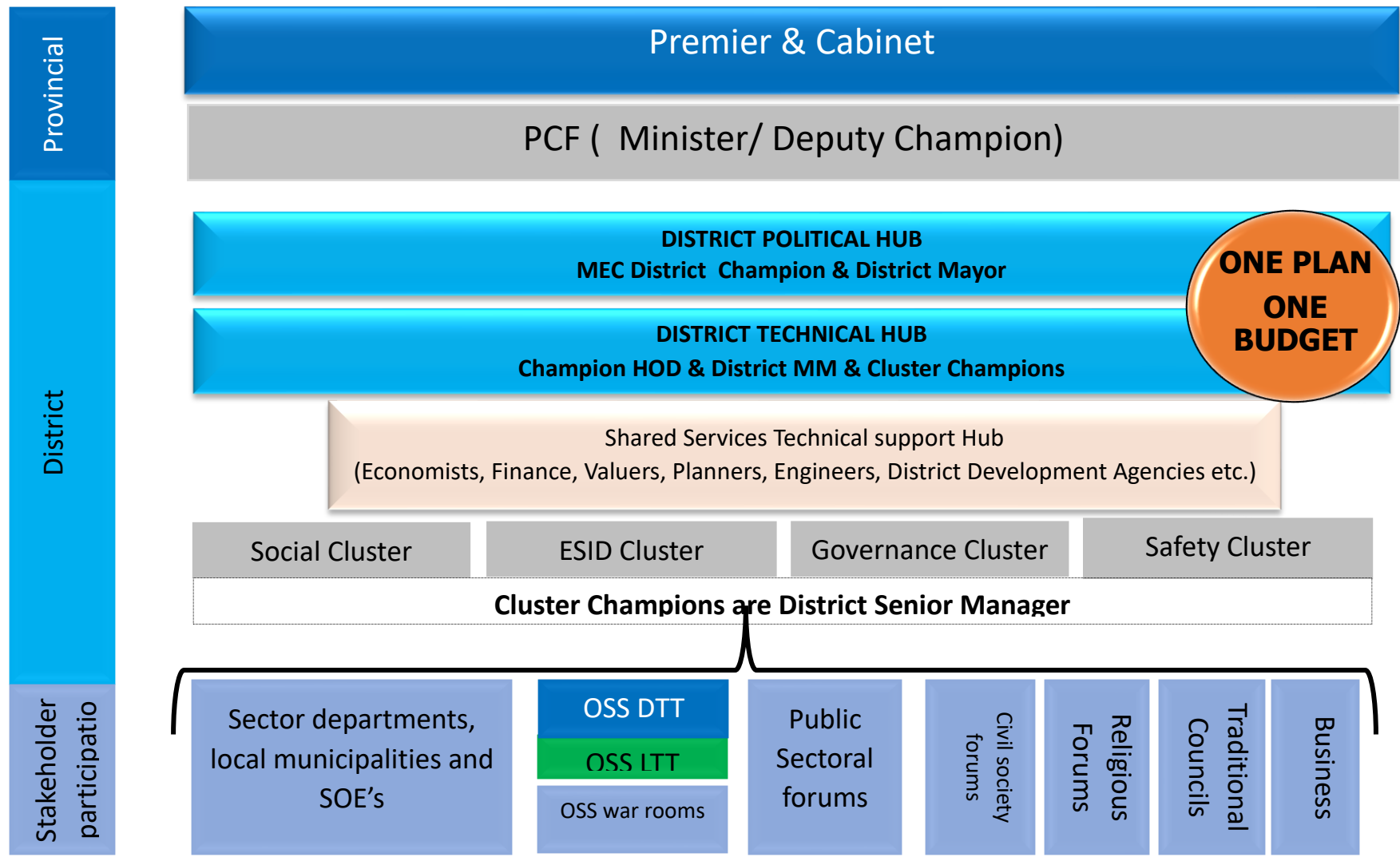
IGR is to further foster an integrated approach to governance, aimed at improving government planning, decision making and service delivery at national, provincial and local levels. The coordination of all spheres has also incorporated the District Development Model.

DDM OBJECTIVES

To **achieve coherent governance**, the President announced:-

- **a coordinated District & Metro level approach to business by all 3 spheres-** “we are going to do away with this fragmented approach to development.”
- 44 Districts and 8 Metros will be the high impact zones for the country;
- **Redirect and confirm Co-operative governance & Integrated collaborative planning and implementation** undertaken at a District and Metro level by all 3 spheres.
 - Institutionalized Long term co planning in ONE PLAN per District & Metro towards Sustainable Development and Spatial Transformation & Equity.
 - Integrated Services
 - Strengthened M&E
- **DDM is a practical Intergovernmental Relations (IGR) mechanism for all three spheres of government & SOE’s to work jointly and to plan and act in unison**
- Ensure that we **bring to life the aspirations** of The People Shall Govern & **Bring government closer to the people**. Developmental change is shaped and owned at district level in partnership with communities, citizens, and social partners.

An Illustration of DDM Framework: Provincial Level is depicted on the next page.



- **Economic Sectors and Infrastructure Development (ESID) Technical cluster as an alignment mechanism:**

The ESID Cluster comprises of a local mayor, local municipal manager, LM representatives and sector departments. The ESID Cluster is therefore an appropriate platform to align IDP matters and matters emanating from the IDP Subcluster as the subcluster only consists of IDP practitioners. IDP matters will therefore be tabled before the ESID cluster.

- **Representative Forums**

The District will host at least three IDP Representative Forum meetings during the financial year and also participate in the IDP Forums of the Local Municipalities and public participation/ engagement meetings. The dates of these meetings will be reflected in the Process Plan.

C. Alignment With Activities of the Provincial IDP Management Plan.

The Processes outlined in the Process Plan are aligned to the Provincial IDP Management Plan. The key activities and their subsequent dates are included and will form part of the Process Plan.

7. District Municipality consultation mechanism with other IDP stakeholders, such as Sector Departments.

7.1. Vertical alignment (National, Provincial, Local spheres);

The National sphere has provided a national framework and guidelines for sectoral, provincial, and municipal planning. This contributes to the creation of a normative framework consisting of common policy guidelines and principles, general strategic guidelines regarding sectoral strategies and spatial macro-strategies.

The national spheres should also co-ordinate and prioritise programmes and budgets between sectors and the national sphere in line with the national framework and in particular the National Spatial Development Perspective (NSDP)-National Development Plan (NDP), the State of the Nation Address as well as the 2022 targets and beyond.

7.2. Provincial Level

At this level, there are specific frameworks with mid-term objectives and targets for public investment and services as well as a spatial macro-framework for all sectors and municipalities. Sectoral programmes and District programmes also need to be coordinated

and aligned. Provincial level is best positioned to facilitate this. Municipalities are urged to be pro-active in soliciting this assistance. Important among policy directives are the following:

- Priorities set by the Premiers State of the Province Address
- Priorities set out in the Provincial Growth and Development Strategy (PGDS) and PGDP. Provincial Spatial Economic Development Perspective

7.3. Local Level

Municipalities have to prepare a 5-year IDP. Interaction between the District and Local Municipalities is essential. The Framework Plan for the District must address the alignment.

The Municipal Manager must, with the support of the IDP Manager / Coordinator and the IDP Steering Committee, ensure that all role players are performing their duties. Performance will be monitored at all the meetings. Organisational restructuring should be provided for inter-disciplinary teams around each Key Performance Area.

7.4. Cross border alignment (other Districts & Provinces).

Cross-border alignment will be attained through the Provincial Planners Forum and the alignment sessions. Furthermore, the IGR structures will also be utilized.

8. Type of alignment mechanisms:

- DDM Structures
- **Representative Forums:** meetings of the IDP RF are detailed on the Process Plan, meetings will be per IDP Phase.
- **One-on-one Sector Department meetings:** There will be one-on-one meetings for the purposes of information exchanges during the months of November and December.

9. Conclusion

The District Planners met on the 25 July 2022 to agree on the draft Framework Plan and Process Plan. Secondly, the Draft Framework Plan and Process plans were the District Executive Committee has endorse the draft plans to be advertised for public comment prior to adoption by Council.

The drafts were on advert and concluded after comments have been received from stakeholders including CoGTA. The detailed action programme with dates of milestone's and events is in the Process Plan.